

Tight Space Casing Kit

Installation Manual

Thank you for choosing the Air 2D Short Casing by Autoterm. This compact housing is designed for flexible installation in tight spaces while ensuring reliable operation and airflow.

Compatibility:

This casing is designed specifically for the Autoterm Air 2D heater model.

Included Hardware:

- 1 × Tight Space Adapter (Assy. ATR2-TSA3D-BK)
- 1 × Upper casing 2D CUT (ATR2-UC2DC-BK)
- 1 × Lower casing 2D CUT (ATR2-LC2DC-BK)
- 4 × Flat Head Self-Tapping Mounting Screws (3.9x9.5)

Installation Steps:

1. Position the Casing

Determine your preferred orientation (top, bottom, left, or right mount). Ensure there is adequate clearance around the casing for airflow and access to heater connections.

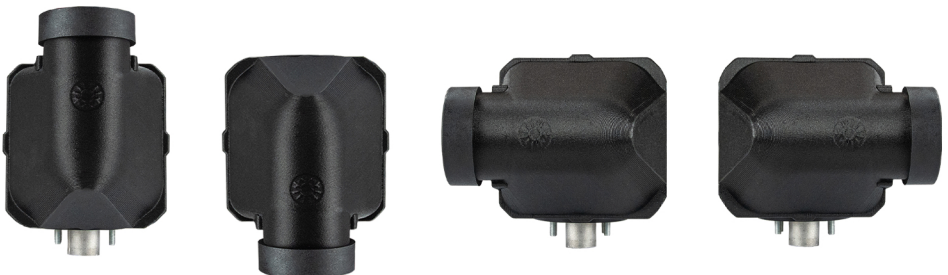
2. Align the Casing

Place the short casing over the heater, aligning the mounting holes on the casing with the designated mounting surface or bracket.

3. Secure the Casing

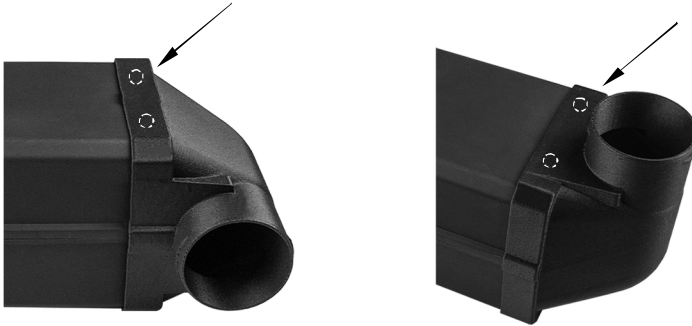
Use the 4 included flat head screws to securely fasten the casing. Tighten evenly to ensure a snug fit without over-torquing.

Possible mounting directions:



Mounting Screw Placement:

Always install 2 screws on the top of the casing and 2 screws on the bottom.
Do not install screws on the side panels!



Dimensions:

